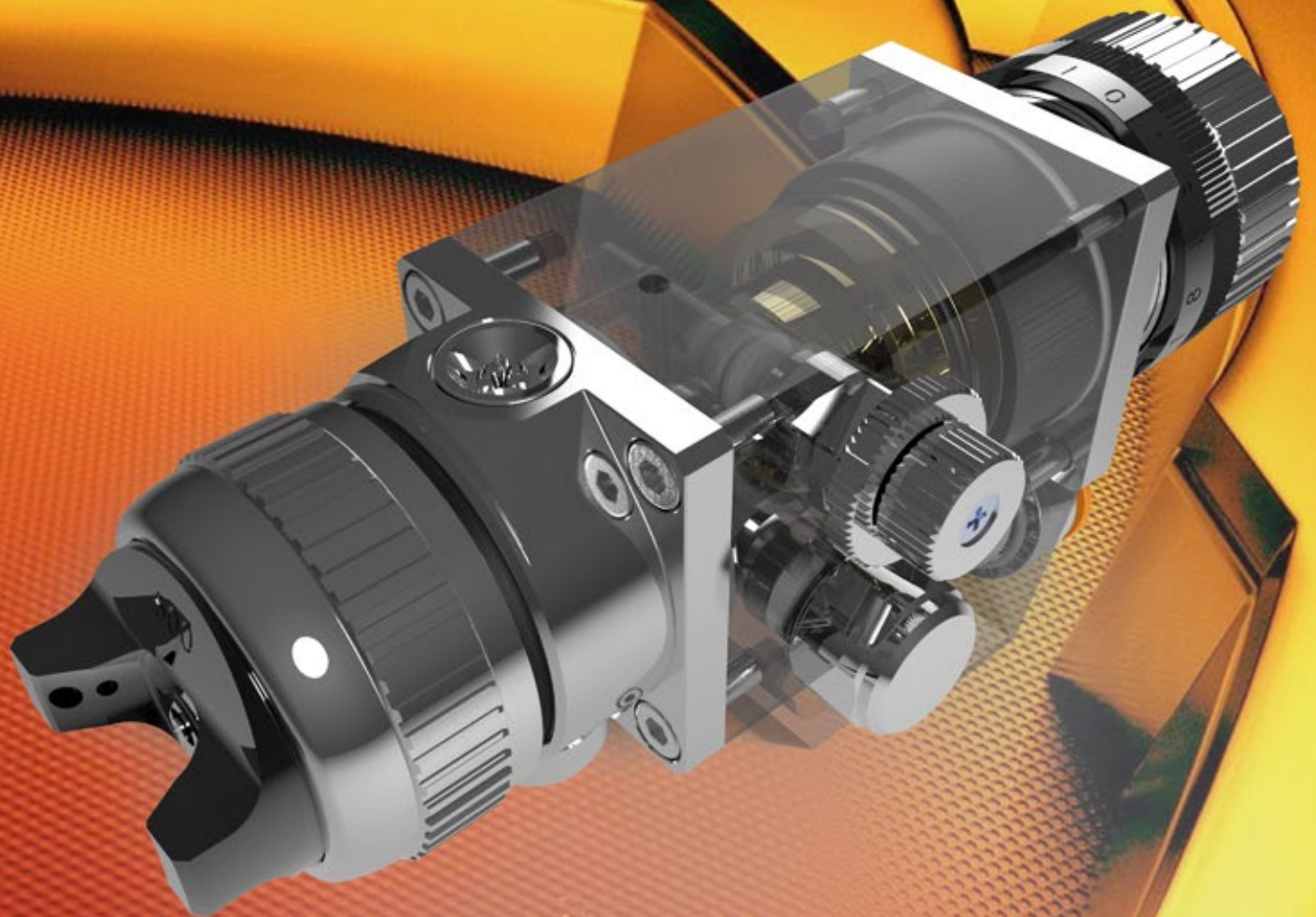


SAGOLA ®

AUTOMATIC SPRAY GUNS



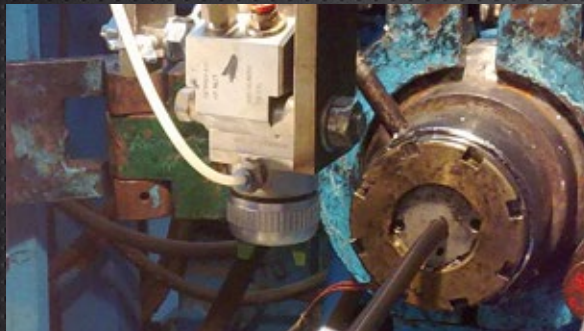
V series

THE NEW **V RANGE** OF AUTOMATIC SPRAY GUNS HAS BEEN DESIGNED AND MANUFACTURED TO CARRY OUT THE **VERY HIGHEST QUALITY** TASKS.

THIS NEW FAMILY OF TOOLS AIMS TO COVER A WIDE VARIETY OF PRODUCT APPLICATIONS, INCLUDING CORROSIVE AND ABRASIVE PRODUCTS.

IT IS DESIGNED TO WORK WITH BOTH WATERBORNE AND SOLVENT-BASED PRODUCTS.

ITS CONSTRUCTION IS CHARACTERISED BY THE REMARKABLY SMALL NUMBER OF PARTS THAT NEED MAINTENANCE, WHICH MAKES IT EXTREMELY RELIABLE, KEEPING DOWNTIME TO A MINIMUM.



THE NEW RANGE EMBRACES ALL KNOWN SPRAY PRODUCTION SYSTEMS:

MEDIUM PRESSURE, HVLP, EPA and MIX.

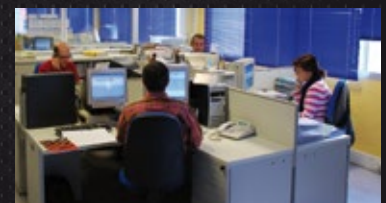
EACH ONE IS AVAILABLE IN MULTIPLE VERSIONS:

SPECIAL FOR CORROSIVE PRODUCTS, ABRASIVE PRODUCTS, SPECIAL FOR ROBOTS,...

IN A WORD, THIS NEW RANGE OF SPRAY GUNS WILL COVER ALL FUTURE PRODUCTION LINE PAINTING NEEDS.

WARRANTY

SAGOLA provides a 3-years guarantee with the main products. We know this is the best way of showing our customers that we believe in our products.



The new V SERIES of spray guns incorporates a **NEW SYSTEM OF REGULATION** allowing the achievement of better finishes and higher performance in any kind of application employing any kind of product.


Paint flow regulator
with integrated adjustable micrometer for a precise and homogeneous paint regulation of all the guns in the line.

Detachable paint-head
and independent from the pneumatic zone, with four leak detection holes between them, covering all possible angles. 100% stainless steel option.


Circulating paint outlet

Nozzle and Needle
Made of stainless steel. Optional Carbide.

Automatic paint packing gland without gaskets that require handling
Made of stainless steel.


New mooring and guidance systems
This new system allows removal and replacement of the spray gun from its workstation, keeping always with the same orientation.



Fan control regulator
This regulator controls the quantity and distribution of air between the lugs and central holes, allowing a perfect distribution of the spray pattern independently of the viscosity of the product.

Fan regulator
This regulator allows us to adjust the size of the fan (of the atomisation air).


Air inlets for atomization and operation

Waste time spent adjusting spray guns at their workstations is eliminated completely.

range

automatic



**INNOVATION + TECHNOLOGY + PERFORMANCE =
MAXIMUM PRODUCTION + MINIMUM MAINTENANCE**

V4 SERIES

Maximum speed of application

Allows working with high paint flows

Stainless steel head versions for corrosive products and tungsten carbide nozzles for abrasives

High production conventional spray gun. Incorporates double fan regulator and product regulator. In the standard version, the nozzle and the needle are made of stainless steel.



APPLICATIONS

- For tasks requiring a high opening and closure rate. Ideal to be used with robots and special machinery.
- Versions for highly corrosive or abrasive products (with tungsten carbide needle and nozzle).
- Special for high speed and top quality finishes.

APPLICATION SECTORS

Metal Industry · Plastic Industry · Automotive Industry · Ceramics

TECHNICAL DETAILS

Dimensions: 164 x 45 x 104 mm

Weight: 785 g

Air consumption: 350 - 400 L/min



Standard version

V5 SERIES

Maximum reduction in product consumption and mist

High speed application

Stainless steel head versions for corrosive products and tungsten nozzles for abrasives

This is the ideal tool where very high application speed along with significant reduction of product consumption are required. Spray mist, pollution, dirt and noise are all greatly reduced, thus improving work conditions.

The high production spray gun incorporates a double spray pattern regulator, product regulator and stainless steel nozzle and needle in the standard version.

APPLICATIONS

- For tasks requiring a high opening and closure rate. Ideal to be used with robots and special machinery.
- Versions for highly corrosive or abrasive products (with tungsten carbide needle and nozzle).
- For tasks where it is necessary to reduce mist and improve work conditions.
- Achieves a drastic reduction in product consumption.

APPLICATION SECTORS

Furniture Industry - Automotive Industry - Plastics

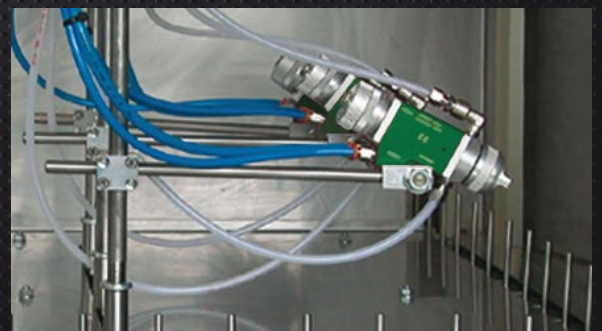
TECHNICAL DETAILS

Spray pressure at aircap: 0.68 bar

Dimensions: 164 x 45 x 104 mm

Weight: 785 g

Air consumption: 500 - 600 L/min



V6 SERIES

Maximum finish quality with waterborne or solvent-based products
 Maximum mist and product consumption reductions
 Very low air consumption. Works at very low pressures

EPA spray system with a minimum product transfer of 65%.
 Savings of paint supply, reduction of mist.
 Stainless steel nozzle and needle, product regulator,
 double fan regulator....

APPLICATIONS

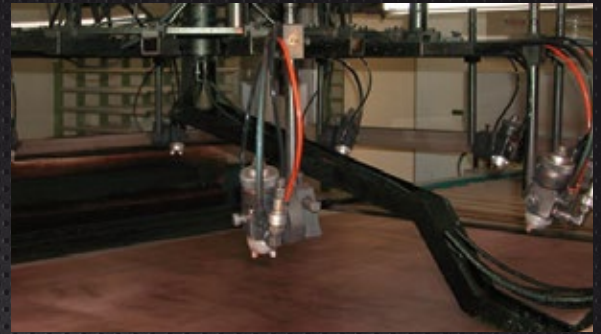
- For tasks requiring a high opening and closure rate. Ideal to be used with robots and special machinery.
- Versions for highly corrosive or abrasive products (with tungsten carbide needle and nozzle).
- For tasks where it is necessary to reduce mist and improve work conditions.
- Achieves a drastic reduction in product consumption.
- For all applications where the very highest quality finish is required.

APPLICATION SECTORS

Furniture Industry · Automotive Industry · Plastics Industry · Textiles · Stains

TECHNICAL DETAILS

Dimensions: 164 x 45 x 104 mm
 Weight: 785 g
 Air consumption: 380 L/min



V7 SERIES

High production, low pollution. Maximum speed of application
 High paint pressure mix system (30-150 bar)
 Low air pressure: 0.5 - 2 bar

The SAGOLA V7 Mix is a high production low pollution spray gun.
 Tungsten carbide product closure mechanism.
 Includes: product inlet filter, air inlet quick couplings,
 double fan regulator and cleaning and maintenance accessories.

APPLICATIONS

- For tasks requiring a high opening and closure rate. Ideal to be used with robots and special machinery.
- For tasks where it is necessary to reduce mist and improve work conditions.
- Achieves a drastic reduction in product consumption.
- Spraying of clearcoats, UV paints,...

APPLICATION SECTORS

Furniture Industry · Metal Industry · Plastic Industry

TECHNICAL DETAILS

Working pressure: 30/150 bar
 Minimum operational pressure: 3.5 bar
 Dimensions: 164 x 45 x 104 mm
 Weight: 945 g.
 Air consumption: 150 L/min.

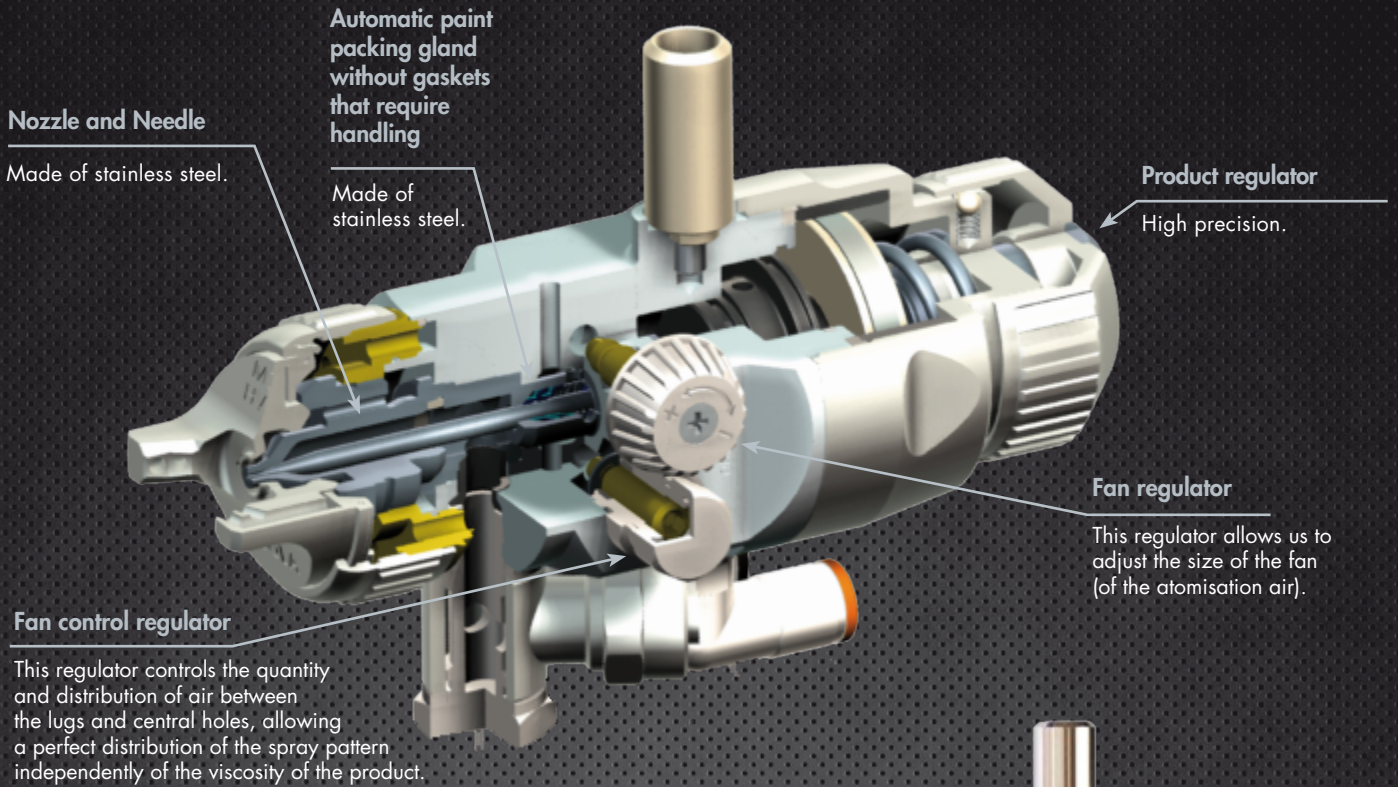


Robot version



Standard version





MINI V

Automatic gun, small size and high precision.
0,3 – 1,80 mm. fluid nozzles.
Mini Xtreme spraying system.
Wide regulation range; paint flow, fan, and pattern shape.
Suitable for small parts painting, and machinery with reduced spaces.
HVLP and EPA high transfer aircaps.

TECHNICAL DETAILS

Weight: 216 g
Dimensions: 32 x 50 x 90 mm
Paint inlet: 1/8"
Spray air inlet: ø 8mm
Cylinder air inlet: ø 4mm
Air consumption: Mini HVLP: 310 L/min Mini EPA: 200 L/min



MiniHVLP air cap

MiniEPA air cap

Round jet air cap
MiniTech



10210217	[0.30]	10210218	[0.30]	10210219	[0.60]
10210208	[0.50]	10210216	[0.50]	10210220	[1.00]
10210201	[0.80]	10210215	[0.80]		
10210202	[1.00]	10210209	[1.00]		
10210203	[1.20]	10210210	[1.20]		
10210204	[1.30]	10210211	[1.30]		
10210205	[1.40]	10210212	[1.40]		
10210206	[1.60]	10210213	[1.60]		
10210207	[1.80]	10210214	[1.80]		

All models in the V series may be customised according to the requirements of the required application. This chart shows standard versions and the optional nozzle and needle combinations with different aircaps and their main features. The data is organised as follows:

Features		V4 Standard	V5 HVLP	V6 EPA	V7 MIX		
Standard	Aluminium head	10250801 0.80 [765]	10210401 0.80 [500]	10280101 0.80 [380]	35230101 13/40 [3]		
	Stainless steel nozzle and needle	10250802 1.00 [765]	10210402 0.80 [600]	10280102 1.00 [380]			
		10250803 1.00 [777]	10210403 1.00 [500]	10280103 1.20 [380]			
		10250805 1.20 [20]	10210404 1.00 [600]	10280104 1.40 [380]			
		10250806 1.20 [765]	10210405 1.20 [500]				
		10250808 1.20 [797]	10210406 1.20 [600]				
		10250809 1.40 [20]	10210407 1.40 [600]				
		10250810 1.40 [765]					
10250811 1.80 [20]							
Corrosive products	Stainless steel head	10250812 0.80 [765]	10210408 0.80 [500]	10280105 0.80 [380]			
	Stainless steel nozzle and needle	10250813 1.00 [765]	10210409 0.80 [600]	10280108 1.40 [380]			
		10250814 1.00 [777]	10210410 1.00 [500]	10280124 1.80 [380]			
		10250815 1.00 [797]	10210411 1.00 [600]				
		10250816 1.20 [20]	10210412 1.20 [500]				
		10250819 1.20 [797]	10210414 1.40 [600]				
		10250820 1.40 [20]	10210415 1.80 [600]				
		10250821 1.40 [765]					
10250824 2.80 [62]							
Abrasive products	Stainless steel head	10250825 1.20 [765]	10210416 1.20 [500]				
	Tungsten Carbide nozzle and needle	10250827 1.40 [765]	10210418 1.40 [600]				
		10250828 1.80 [67]					
		10250829 2.20 [64]					
		10250830 2.80 [62]					
Standard Robot	Aluminium head	10250831 0.80 [765]	10210419 0.80 [500]	10280111 0.80 [380]	35230102 13/40 [3]		
	Stainless steel nozzle and needle Robot	10250832 1.00 [765]	10210421 1.00 [500]	10280114 1.40 [380]			
		10250834 1.00 [797]	10210423 1.20 [500]				
		10250835 1.20 [20]	10210424 1.20 [600]				
		10250838 1.20 [797]	10210425 1.40 [600]				
		10250838 1.40 [20]					
		10250840 1.40 [765]					
Corrosive products Robot	Stainless steel head	10250842 0.80 [765]	10210427 0.80 [600]	10280115 0.80 [380]			
	Stainless steel nozzle and needle Robot	10250844 1.00 [777]	10210430 1.20 [500]	10280116 1.00 [380]			
		10250845 1.00 [797]	10210431 1.20 [600]	10280117 1.20 [380]			
		10250846 1.20 [20]	10210432 1.40 [600]	10280118 1.40 [380]			
		10250848 1.20 [777]	10210433 1.80 [600]				
		10250849 1.20 [797]					
		10250850 1.40 [20]					
		10250851 1.40 [765]					
		10250852 1.80 [20]					
		10250853 2.20 [64]					
		10250854 2.80 [62]					
		Abrasive products Robot	Stainless steel head	10250855 1.20 [765]	10210434 1.20 [500]	10280119 1.20 [380]	
			Tungsten Carbide nozzle and needle Robot	10250856 1.40 [78]	10210435 1.20 [600]		
10250857 1.40 [765]	10210436 1.40 [600]						
10250858 1.80 [67]							
10250859 2.20 [64]							
10250860 2.80 [62]							

* Consult more options.

PRODUCTS APPLICATION GUIDES	V4 Standard	V5 HVLP	V6 EPA	V7 MIX
Liquid products. Wood, textile and tannery dyes, Teflon	1.0 [765]	0.8 [500] 0.8 [600] 1.0 [500]	0.8 [380] 1.0 [380]	
Special for double-coat finishes: metallics and pearls finishes for the automotive and plastics industries	1.0 [777] 1.2 [777]	0.8 [500] 1.0 [600] 1.2 [600]	1.0 [380] 1.2 [380]	
Special for HS finishes, HS single stage and clearcoats. Auto industry, plastics, wood	1.0 [797] 1.2 [797]	1.0 [500] 1.2 [600]	1.2 [380]	0.009 [3] 0.001 [3]
Finishes in general: Paints, clearcoats for the wood and metal industries	1.2 [765] 1.4 [765] 1.2 [777]	1.0 [500] 1.2 [500] 1.2 [600]	1.0 [380] 1.2 [380]	0.009 [3] 0.011 [3] 0.013 [3]
Primers, basecoats, sealants, fillers for the wood and metal industries	1.2 [765] 1.4 [765]	1.2 [500] 1.2 [600] 1.4 [600]	1.2 [380] 1.4 [380]	0.013 [3] 0.015 [3] 0.018 [3]
Abrasive products - ceramic paints - paints for glazing - for the ceramics and vitro-ceramics industries	1.4 [78] CT. 1.8 [67] CT. 2.2 [64] CT. 2.8 [62] CT.	1.2 [500] CT. 1.2 [600] CT. 1.4 [600] CT.	1.4 [380] CT.	
Glues, adhesives	1.2 [20] 1.4 [20] 1.8 [20]	1.2 [500] 1.4 [600]	1.4 [380]	

